

ATS

B TYPE

E

Easy

D

Digital

D

Design

Y

es

Description

ATS B TYPE uses our unique ATS controller, ACU-MP5 which is connected to ATS by connector for the first time in Korea, so that it is easy to install and extra wiring work is not necessary.



Key Features

- Remote control and monitoring : RS 485 communication
- Detects 3P of commercial power

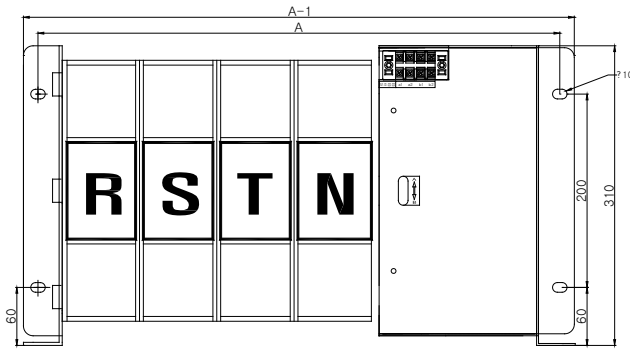
Mechanical Features

- Controlled by one coil
- Accurate movement of latch
- Attachable with being loaded
- Control interface is located on the right side - easy to connect

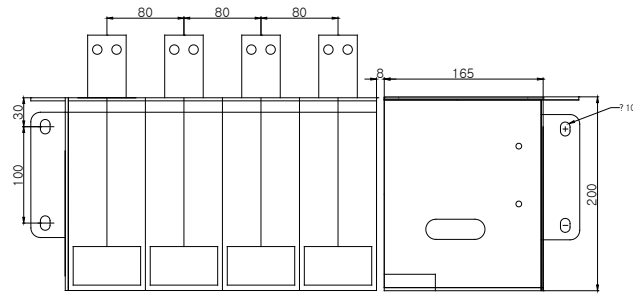
Specifications

- Rating Volt. : 600Vac, 50/60Hz, 125Vdc
- Rating Curt. : 600A, 800A, 1000A, 1200A
- Number of Poles : 3, 4 Poles
- Operating Way : 2 POSITION
- Connecting Way : BACK
- Input Volt./Curt. : 220Vac±20%, within 10A
- Transferring Time : 15ms
- Contact Parting Time : 10ms
- Chattering Time : 3ms

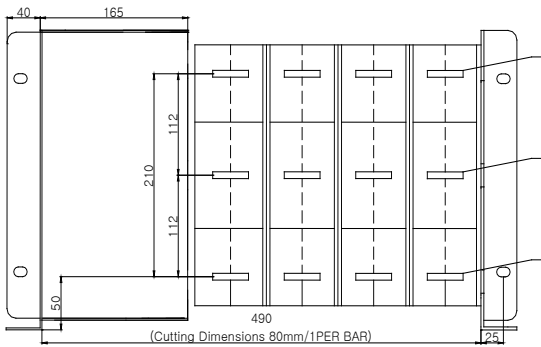
Connection Circuit



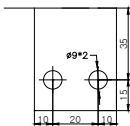
FRONT VIEW



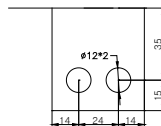
TOP VIEW



INPUT
OUTPUT
INPUT



600A



800~1200A

TYPE		BA	BB	BC	BD
A	3P	460			
	4P	540			
A-1		570(1Per bar80mm eduction)			
Short current		15KA	15KA	22KA	22KA
Short peak current		37.5KA	37.5KA	50KA	50KA
Weight		38	40	41	43
Busbar thickness(INPUT)		7t	7t	10t	12t
Busbar thickness(OUTPUT)		10t	10t	10t	12t

Miscellaneous

- RS 485 MODBUS RTU PROTOCOL
- Operating Temperature(°C) : -20~40
- Manufactured according to KEMC 1112



엔진 발전기 제어 전문기업

이지콘 (주)

Tel : 82-32-677-9806
9807

Fax : 032-677-

<http://www.egcon.co.kr>

sales@egcon.co.kr